

Community Safety Partnerships 2016/17

CVS Criminal Justice Forum

Partners:

Bournemouth Borough Council

Dorset Police

Dorset & Wiltshire Fire & Rescue Service

Dorset Clinical Commissioning Group

National Probation Service

Community Rehabilitation Company

Dorset Youth Offending Service

Voluntary Sector

Priorities:

Domestic Abuse

Sexual Violence

Alcohol-related violence

Anti-Social Behaviour

Hate Crime

Preventing Violent Extremism

Modern Slavery

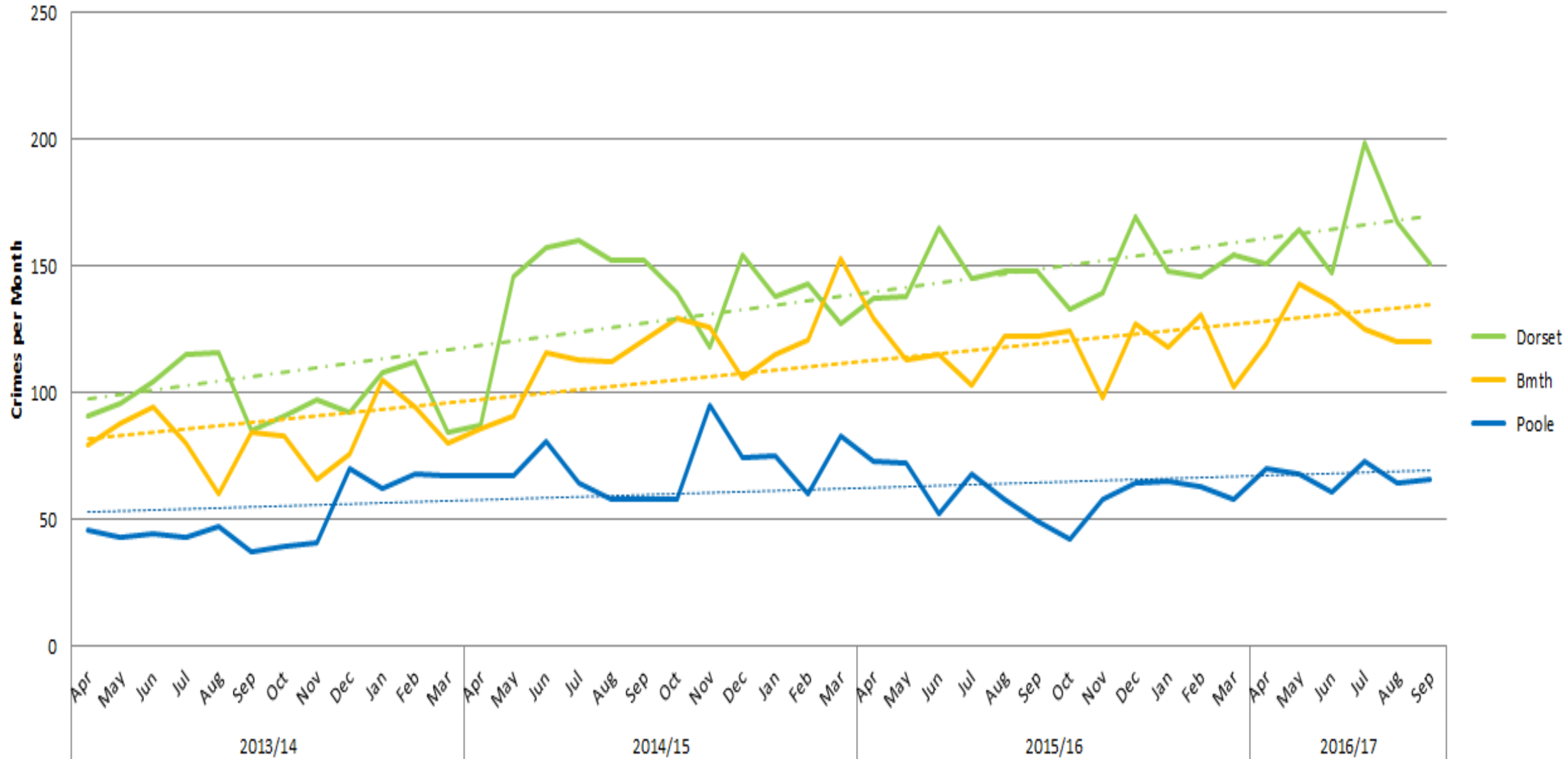
What's happening across Dorset?



Building a Better Bournemouth

Domestic Abuse Violent Crime 2013-16

Data Source: Dorset Police



Domestic Abuse:

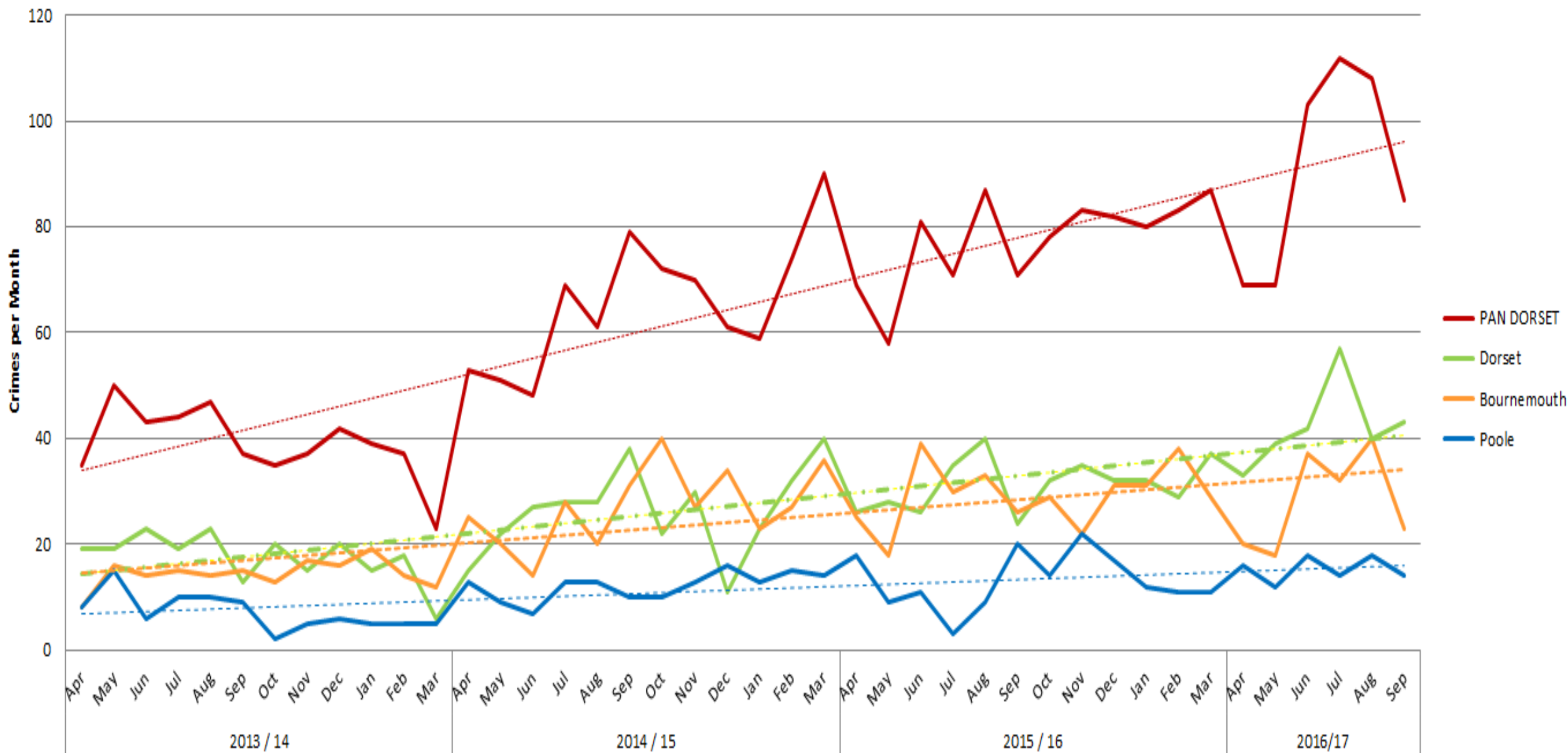
2015/16 – 851 cases of high risk of harm

1,180 children living in households with high risk of harm

c.60% of children living in households where DA is present are physically harmed themselves

Serious Sexual Offences 2013-16

Data Source: Dorset Police



c. 40% of victims aged under 18

28% relate to domestic abuse – present/past partner

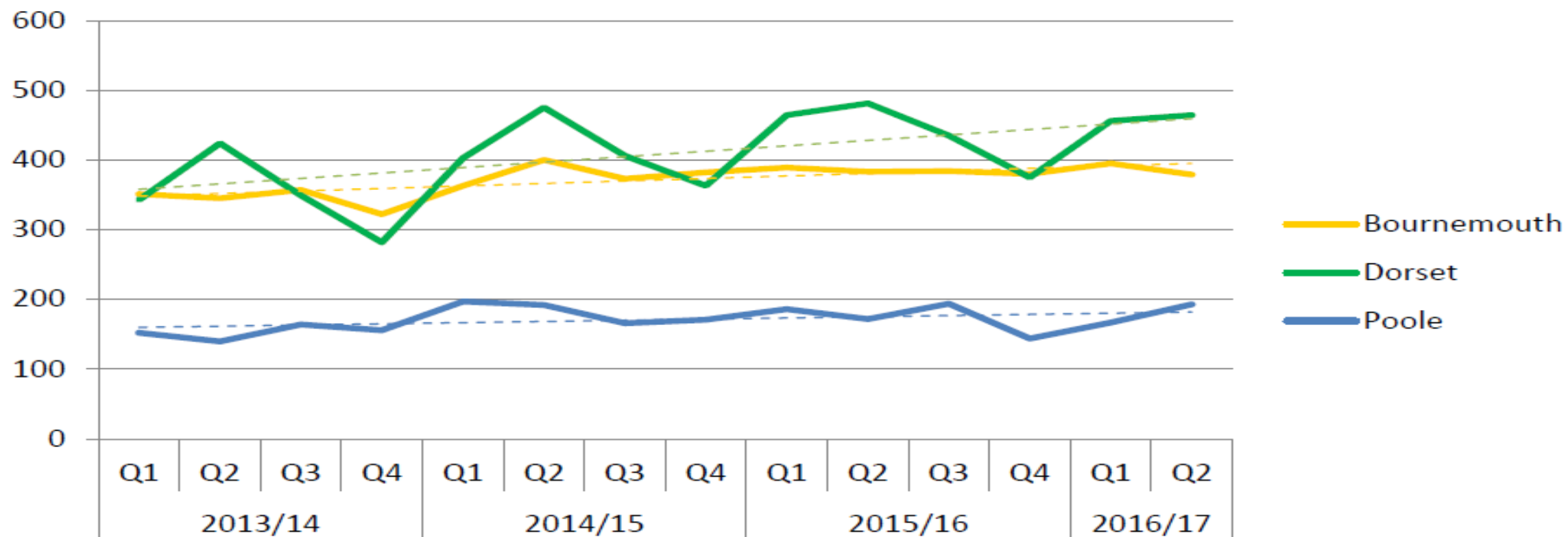
27% - friend or acquaintance – someone met previously

Only 10% “Stranger”

Vulnerability of victims a major factor – age, mental health, substance misuse

Trend 2013-16

Assault With Injury Crimes



Assault With Injury Crimes	Apr – Sep 2015	Apr – Sep 2016
Bournemouth	772	774 (0.3%)
Dorset	945	920 (-2.6%)
Poole	358	360 (0.6%)
Pan-Dorset	2075	2054 (-1.0%)

Alcohol-related violence:

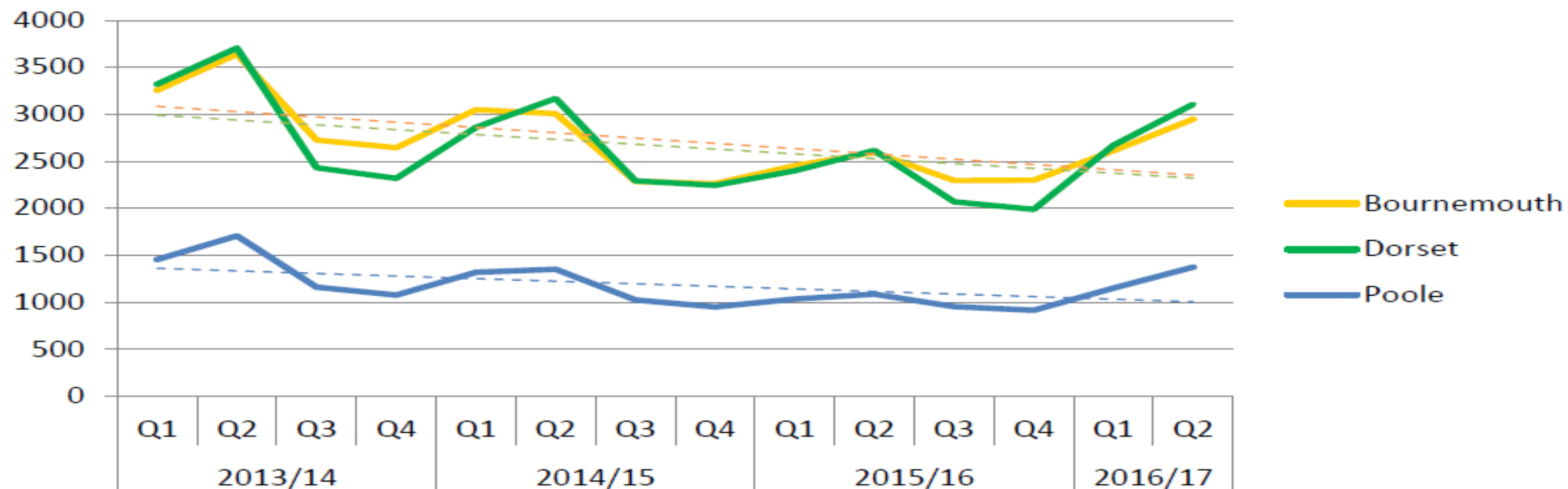
32% of assaults are domestic related

c40% of assaults are alcohol related

Over 50% occur between Friday night and Sunday morning

Trend 2013-16

Total ASB Reported to Dorset Police



Total Reported ASB	Apr – Sep 2015	Apr – Sep 2016
Bournemouth	5048	5561 (10.2%)
Dorset	5014	5776 (15.2%)
Poole	2120	2527 (19.2%)
Pan-Dorset	12182	13864 (13.8%)

Anti-Social Behaviour:

First increases in ASB reporting in recent years

In Dorset – Purbeck & Weymouth saw biggest increases

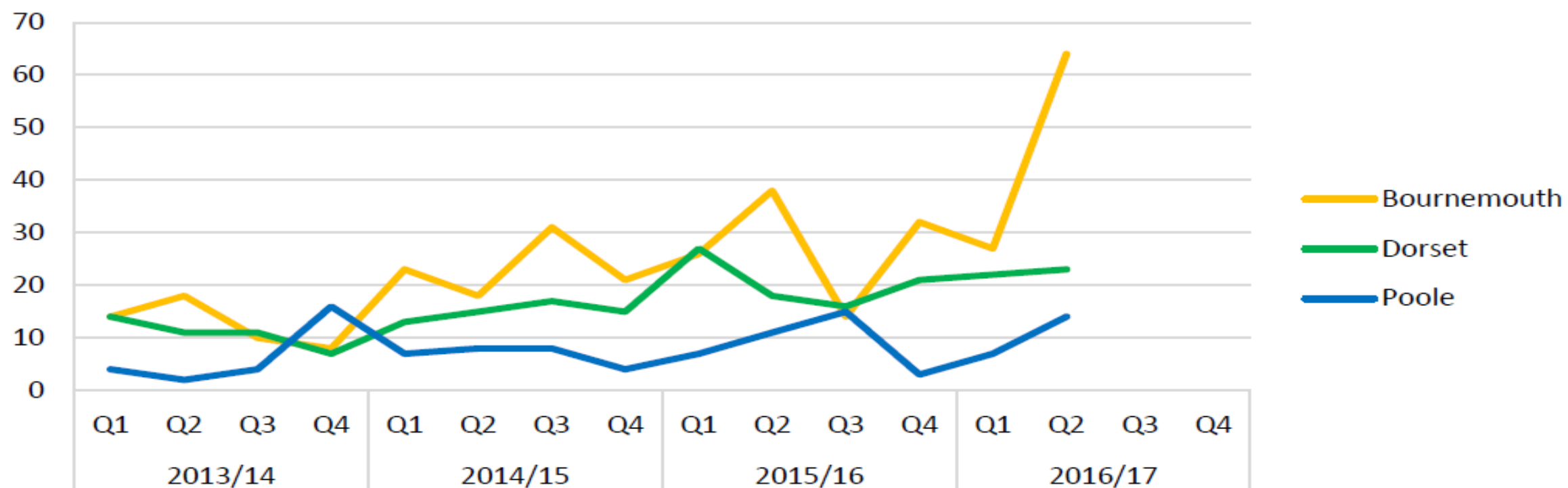
Begging & street drinking seem to be a significant cause

Gaps in youth services starting to impact?

Racially / Religiously Aggravated Crime Reported to Dorset Police

	2013/14				2014/15				2015/16				2016/17			
	Q1	Q2	Q3	Q4	Q1	Q2	Q3	Q4	Q1	Q2	Q3	Q4	Q1	Q2	Q3	Q4
Bournemouth	14	18	10	8	23	18	31	21	26	38	14	32	27	64		
Dorset	14	11	11	7	13	15	17	15	27	18	16	21	22	23		
Poole	4	2	4	16	7	8	8	4	7	11	15	3	7	14		

Racially / Religiously Aggravated Crime Three Year Trend



Hate Crime:

Racially/religiously aggravated hate crime in Bournemouth more than doubled in July 2016.

But has fallen again since – a blip or ongoing issue?

Will US Election result in similar “blip” to Brexit?

What are the challenges?

Some possible examples of where could VCS deliver & add value?

Support for children affected by domestic abuse

Adolescent to parent violence services

Reaching out to diverse communities – BME, LGBTQ, older people

Ensuring all staff who work with vulnerable people are trained in Domestic Abuse & Sexual Violence

Working with entrenched street drinkers

Thank You

Any Questions?



Building a Better Bournemouth