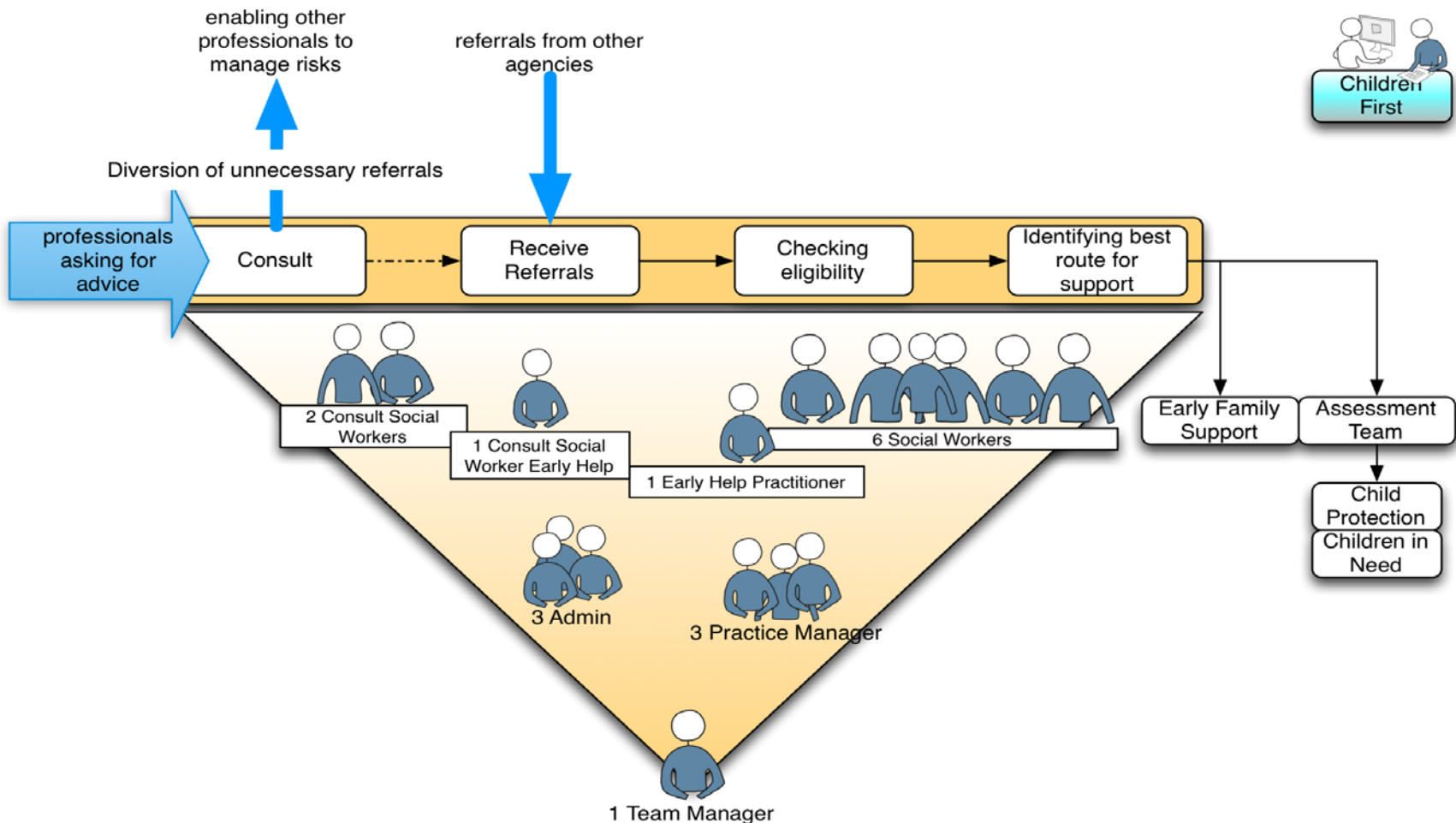


Children FIRST

Families Initial Response and
Safeguarding Team

Bournemouth Children's Social Care
FRONT DOOR

What does it look like?



When should I contact the service?

- ❖ If you are worried a child or young person is at risk of, or is being harmed.
- ❖ If you know of a child whose health and development may be significantly impaired without the multi-agency provision of services; or is disabled.
- ❖ If you need consultation or advice about a child you are working with who is not currently known to Children's Social Care. (CONSULT offer)

What team will do

- ❖ Take immediate protective action
- ❖ Refer to the relevant Children's Social Care teams to lead on a multi-agency assessment
- ❖ Offer advice and information about services and support available to the child and their family.
- ❖ Offer advice and information on how practitioners can work together to support a child and their family through the Early Help arrangements.
- ❖ Offer support and advice when practitioners are having difficulty working with a child or young person.

How do I get in touch?

During office hours (8.30am - 5.15pm, Mon -Thurs 8.30am - 4.45pm Fri)

Email: childrenfirst@bournemouth.gov.uk

Telephone: 01202 458101

Children FIRST

79 Lansdowne Road

Bournemouth

BH1 1RP

Out of hours

Telephone: 01202 657279