

Dorset Community Safety Partnerships

1st April 2014

Criminal Justice Forum

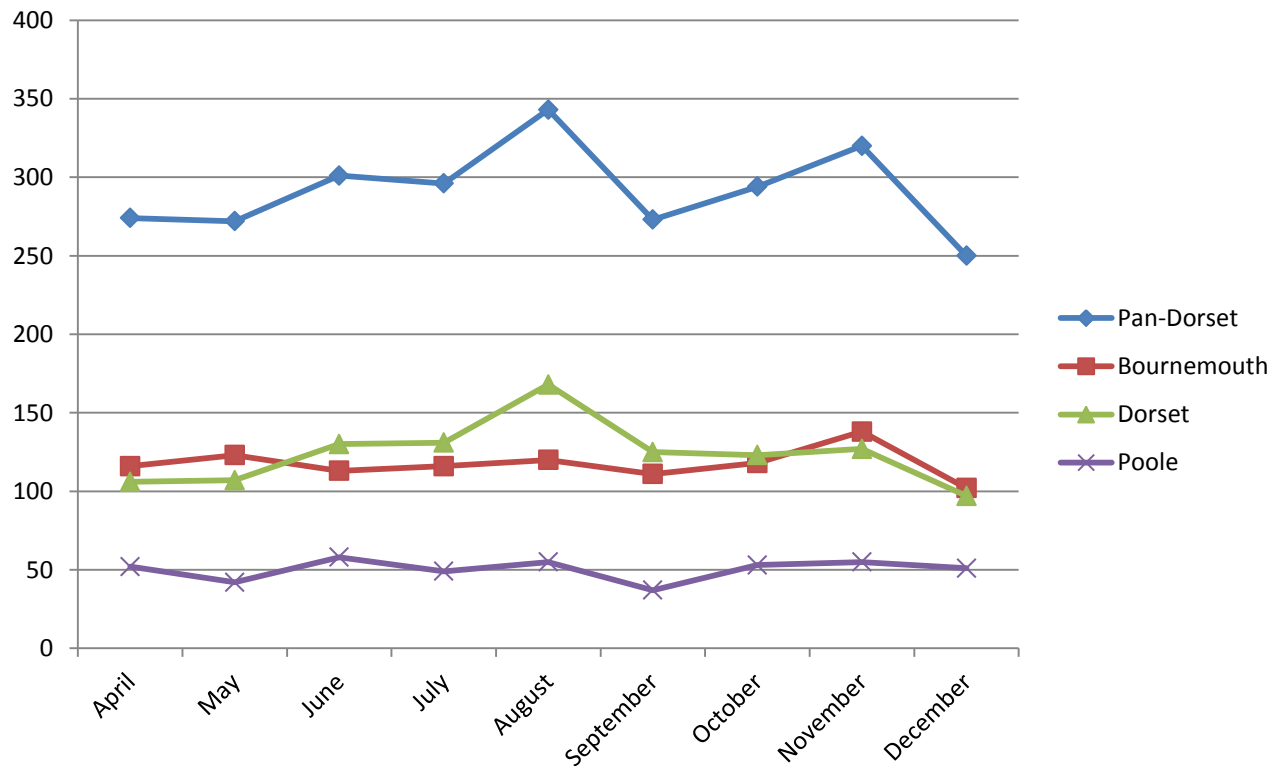


Community Safety Partnerships

- 3 Statutory partnerships involving local authorities, Police, Probation, Fire & NHS
- Voluntary Sector, PCC, Youth Offending also attend
- Annual Strategic Assessment & Delivery Plan
- Increasing collaboration across Dorset

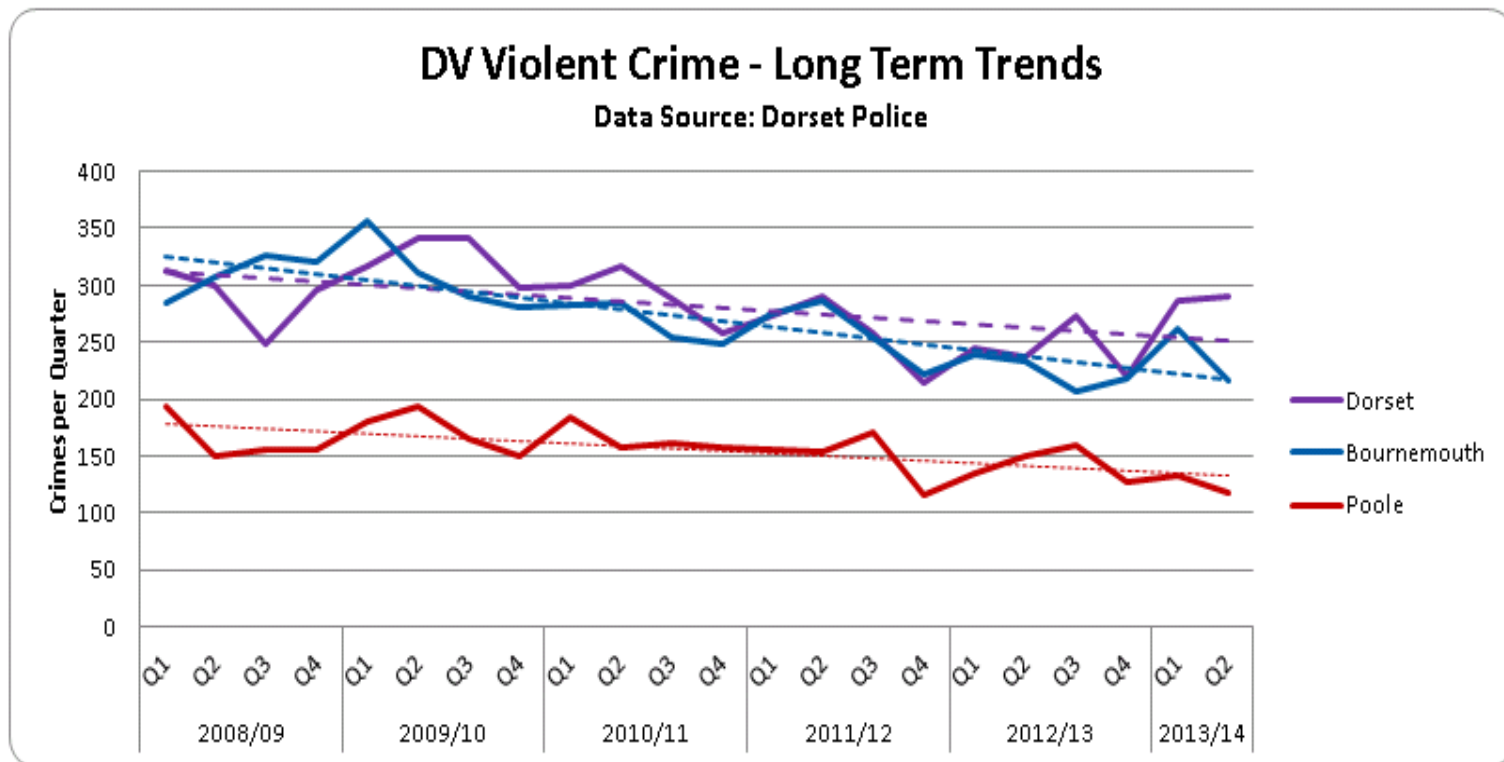
Violent Crime

Assault with injury



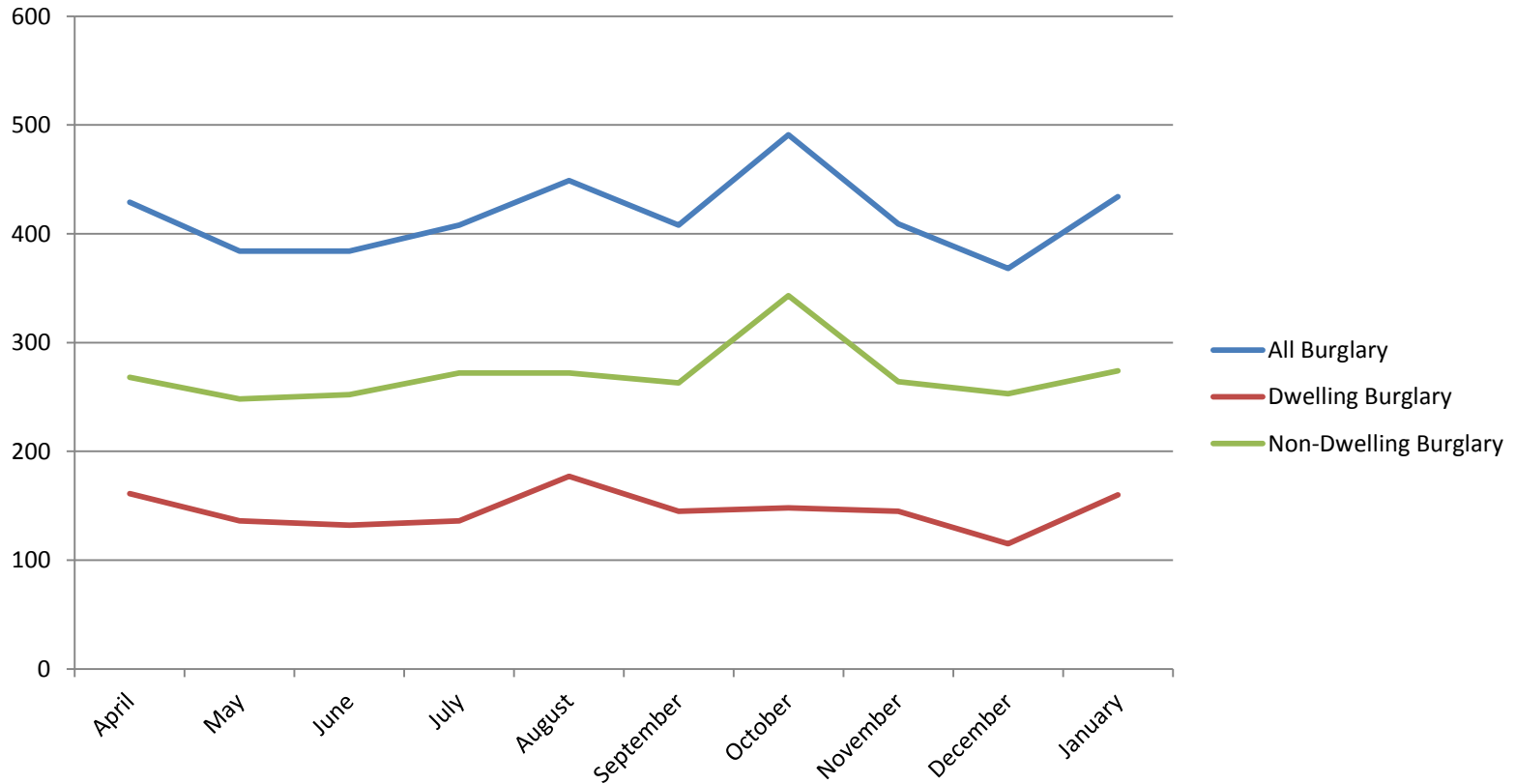
Violent Crime

Domestic Violence



Acquisitive Crime

Burglary – Dorset 13/14



Priorities

Violent Crime:

- Domestic Abuse & Sexual Violence
- Violence related to alcohol & night-time economy

Priorities

Anti-social Behaviour:

- Identifying vulnerable & repeat victims & focusing on “personal” asb
- Tackling deliberate fires

Priorities

Acquisitive Crime & Reducing Reoffending:

- Focus on dwelling burglary
- Prolific & Persistent Offenders

Other Priorities & Issues

- Hate Crime
- Drug Dependence
- Tackling Prostitution
- Mental Health
- Human Trafficking

Working in Partnership

- Services to victims – young victims of crime, vulnerable victims
- Preventing offending & reducing re-offending – preventative projects, perpetrator programmes

Any Questions?

